



Reynolds Development
September 26, 2012

Existing Conditions



E. DAYTON STREET

Hatching depicts limit of easement parcel.
 Pedestrian/vehicle easement for
 purpose of maintenance & operation
 for surface water runoff, for use
 at or along the common boundary
 parcel & easement parcel. 129137.
 Amended by Doc #2239049 (Item 10)



N. BLOUNT STREET

N. LIVINGSTON STREET

E. MIFFLIN STREET

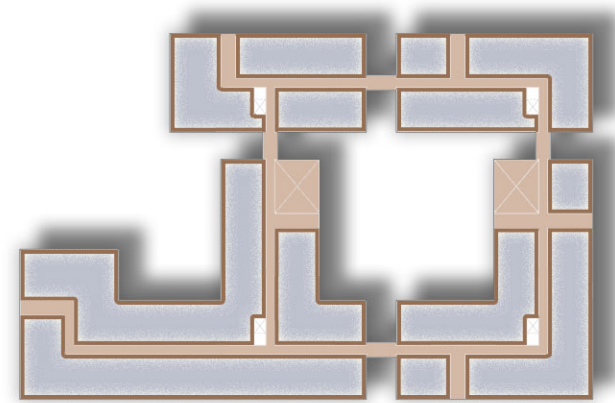


N. BLOUNT STREET

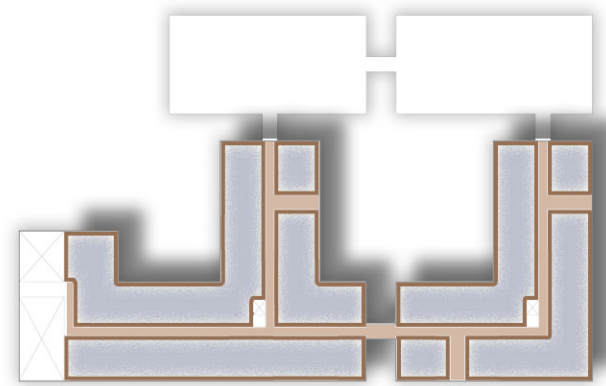
N. LIVINGSTON STREET

E. WASHINGTON AVENUE

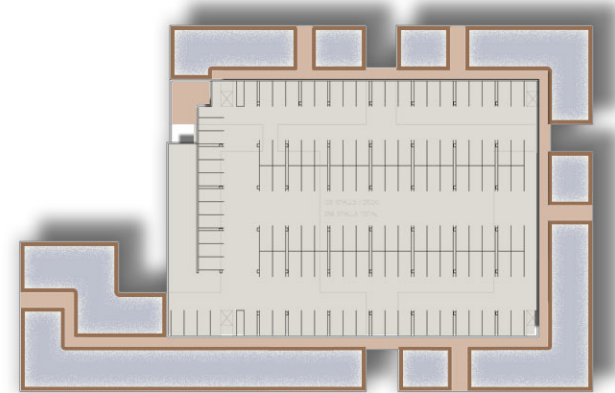
Reynolds Development
 September 26, 2012
Site Plan-Option 2



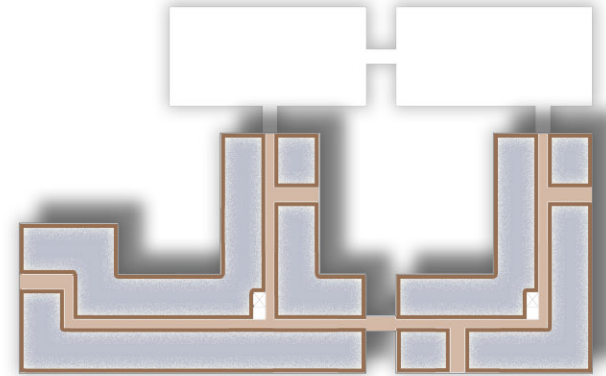
THIRD FLOOR PLAN



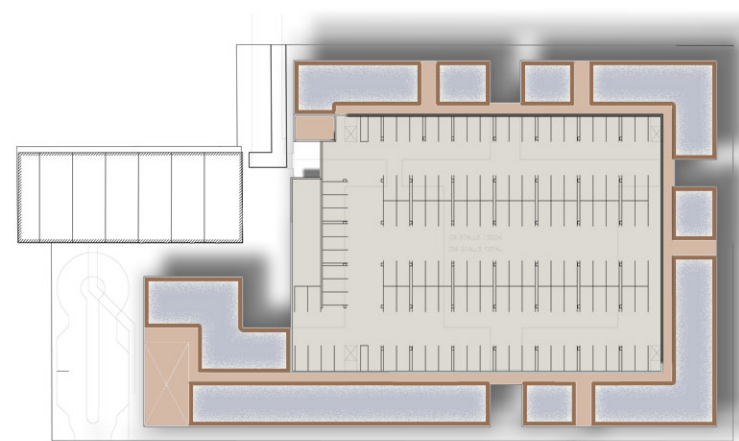
SIXTH FLOOR PLAN



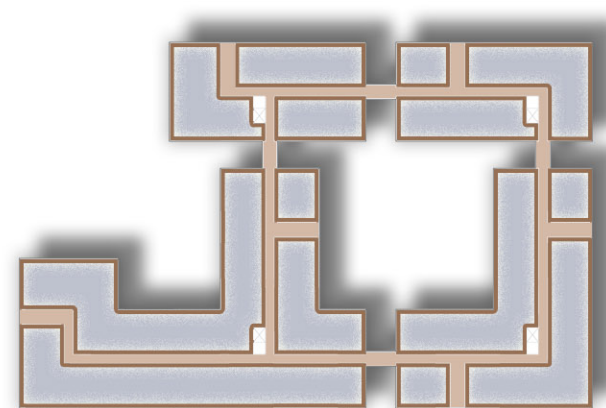
SECOND FLOOR PLAN



FIFTH FLOOR PLAN



FIRST FLOOR PLAN



FOURTH FLOOR PLAN

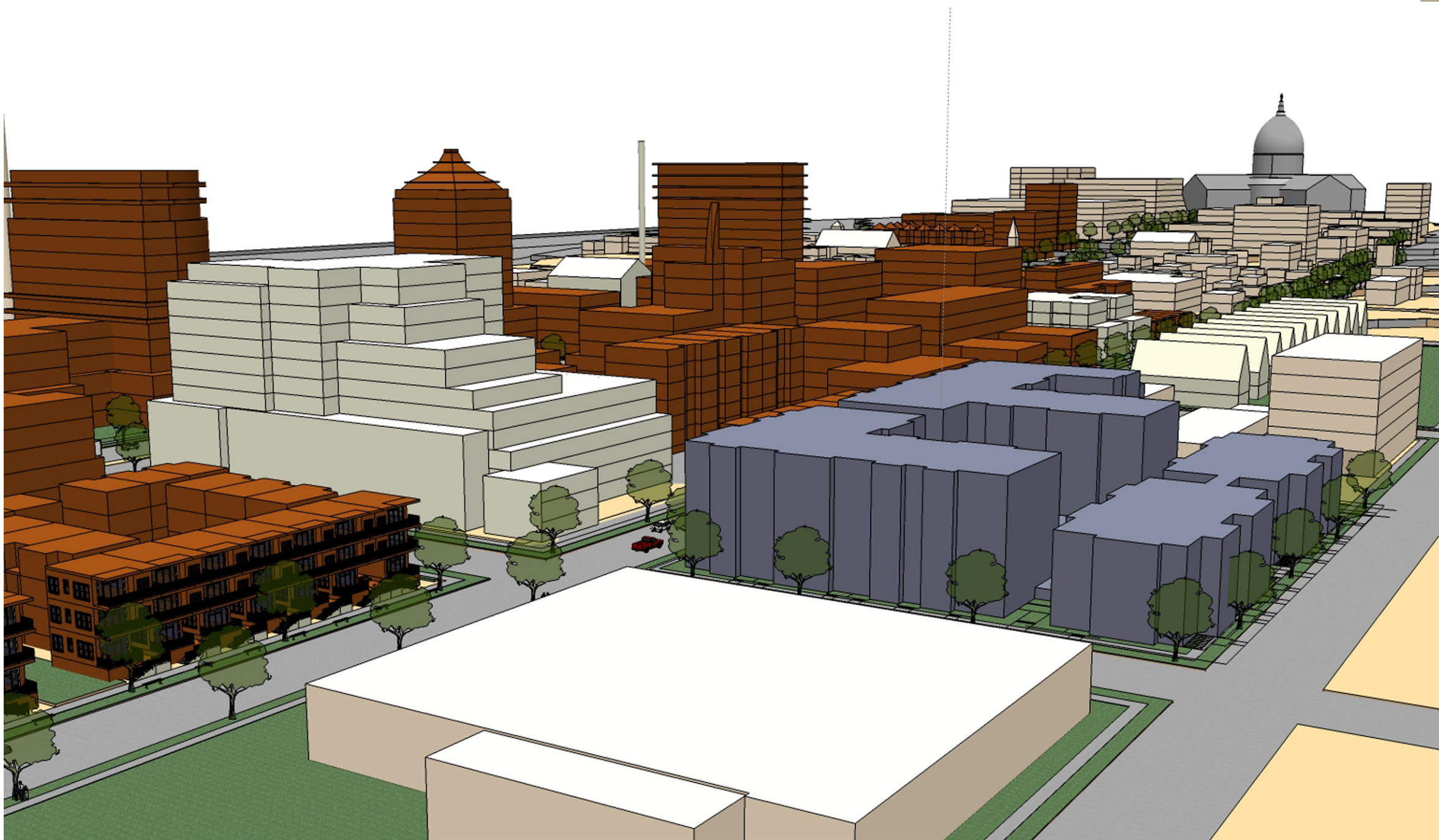
UNIT MIX:

EFFICIENCY	-	20%
ONE BEDROOM	-	45%
TWO BEDROOMS	-	25%
THREE BEDROOM T.H.	-	10%

Reynolds Development
September 26, 2012

Floor Plans -Option 2

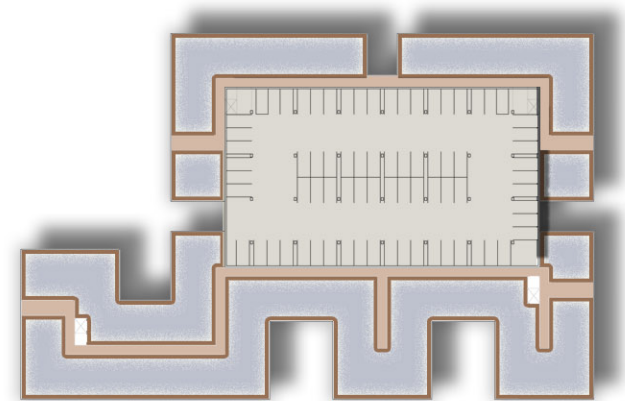
- CAPITOL GATEWAY CORRIDOR PLAN
- PROPOSED DEVELOPMENT
- THE CONSTELLATION
- EXISTING BUILDING



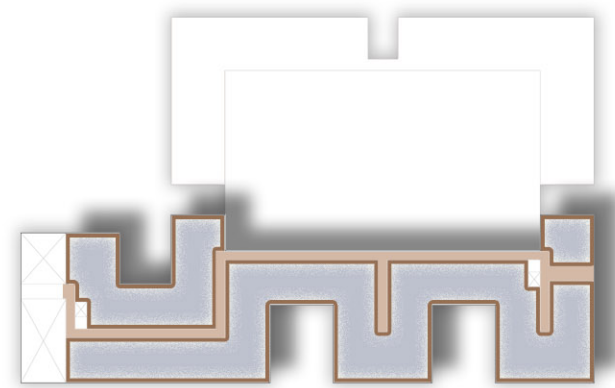
Aerial Perspective looking west

Reynolds Development
September 26, 2012

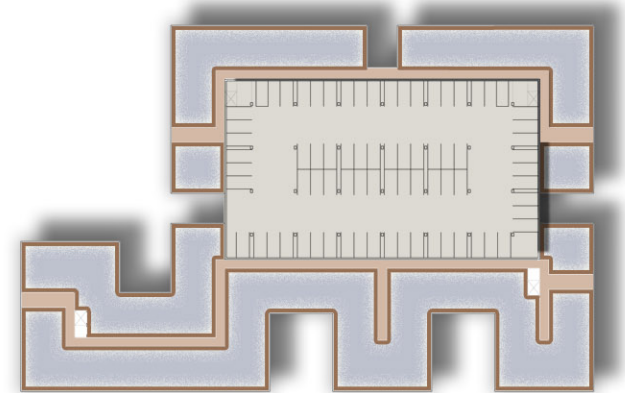
Perspectives Option 2



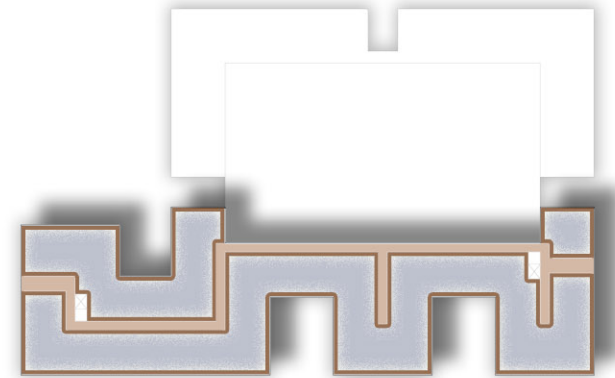
THIRD FLOOR PLAN



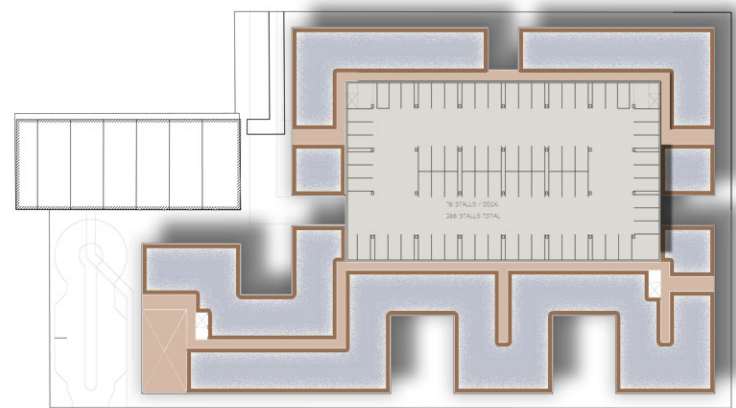
SIXTH FLOOR PLAN



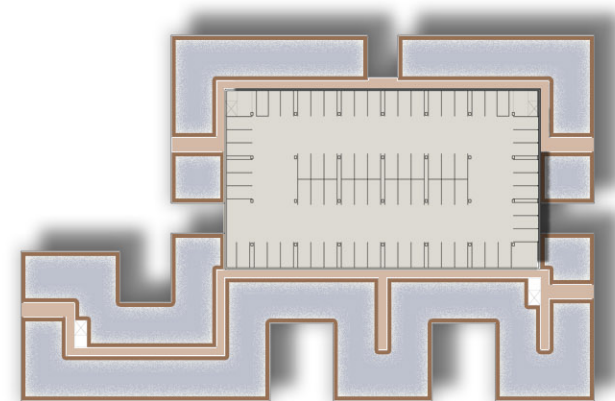
SECOND FLOOR PLAN



FIFTH FLOOR PLAN



FIRST FLOOR PLAN

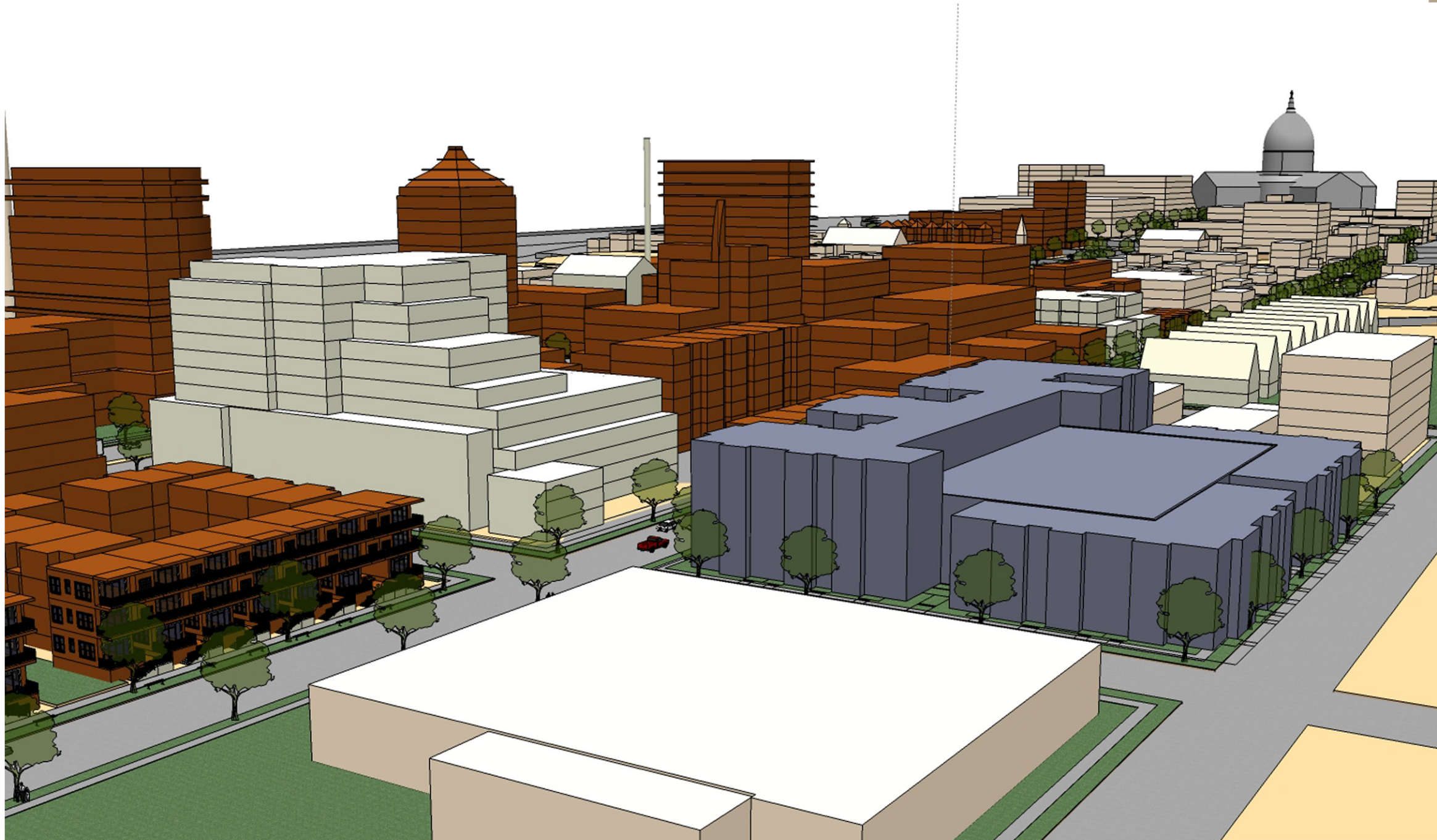


FOURTH FLOOR PLAN

Reynolds Development
September 26, 2012

Floor Plans -Option I

- CAPITOL GATEWAY CORRIDOR PLAN
- PROPOSED DEVELOPMENT
- THE CONSTELLATION
- EXISTING BUILDING



Aerial Perspective looking east at Mifflin Street

Reynolds Development
September 26, 2012

Perspectives Option I