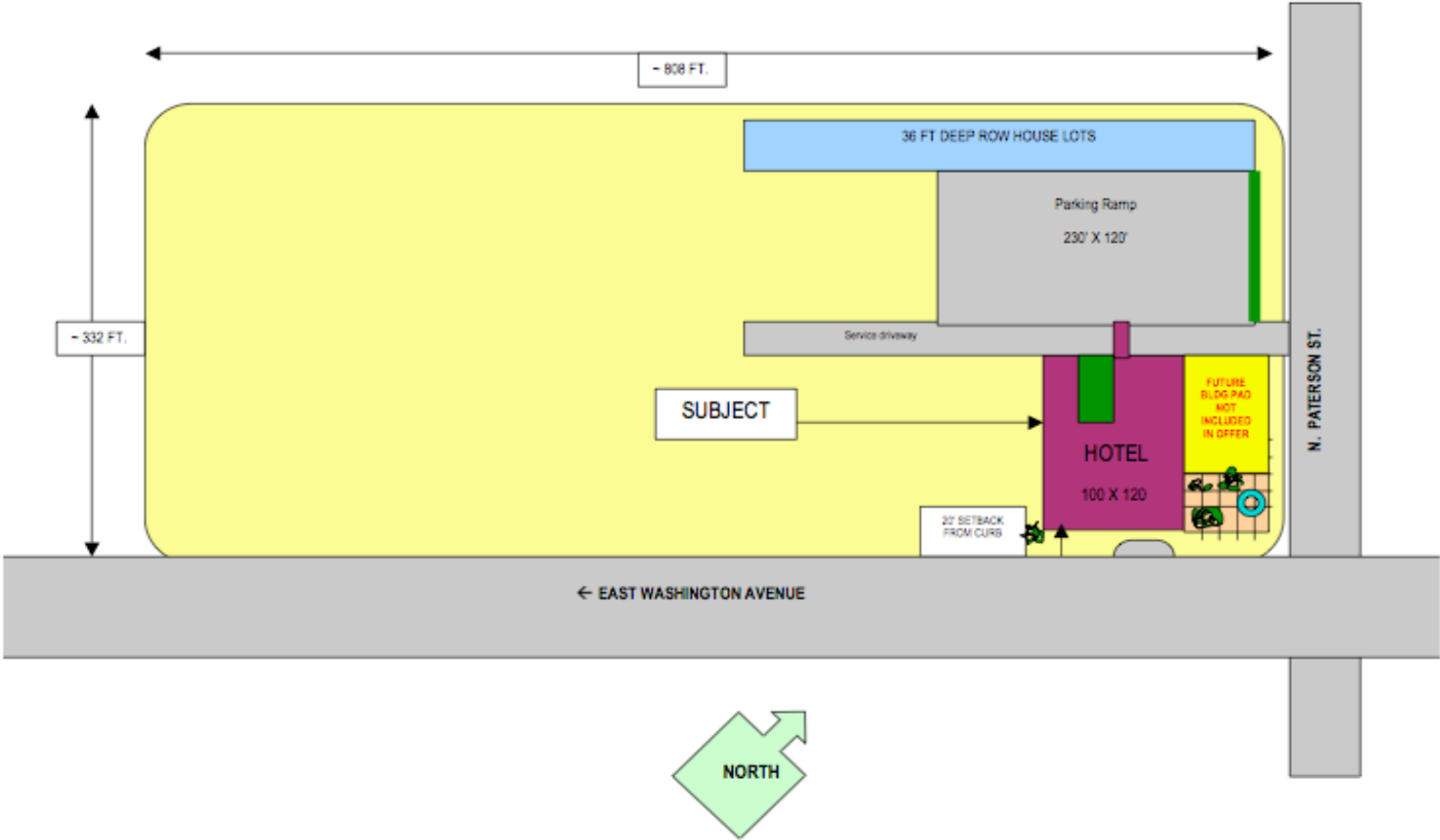


The LaFollette Hotel, Hostel, "slow food" restaurant and coffee bistro features meeting and entertainment venues, rooftop terrace with solar panels, kitchen garden and water management facility; Japanese garden between towers, and two ground-level seating areas, one with fire pit and water fountain to compliment Breese Stevens field across the street

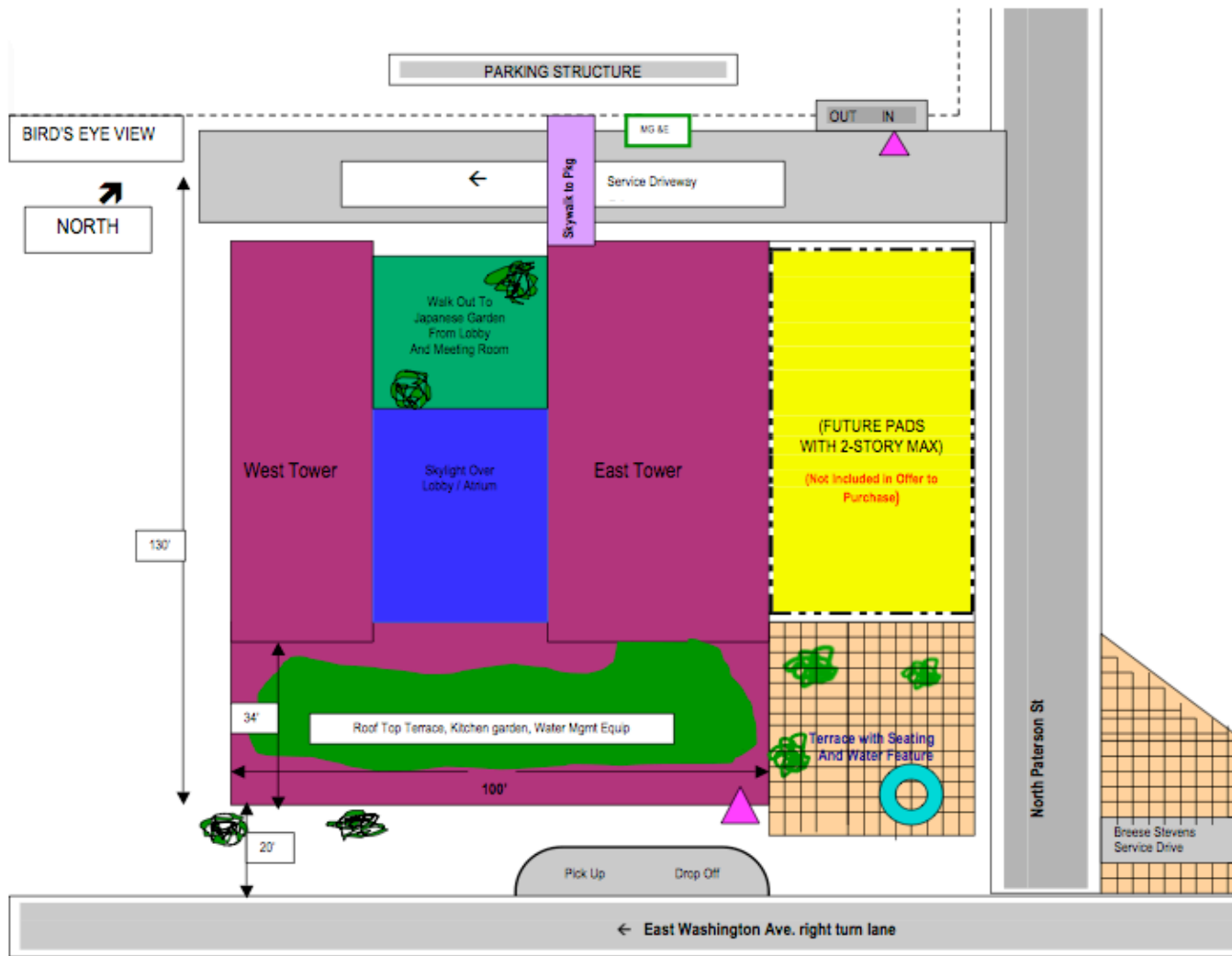




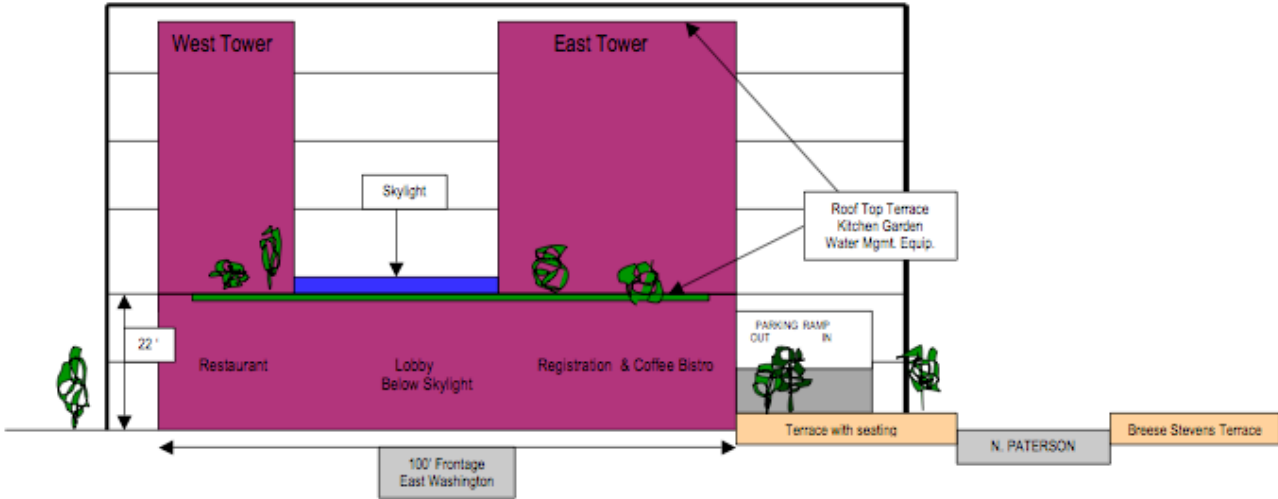
The LaFollette Hotel
854 E. Washington Ave



The LaFollette Hotel
Drawings not to scale

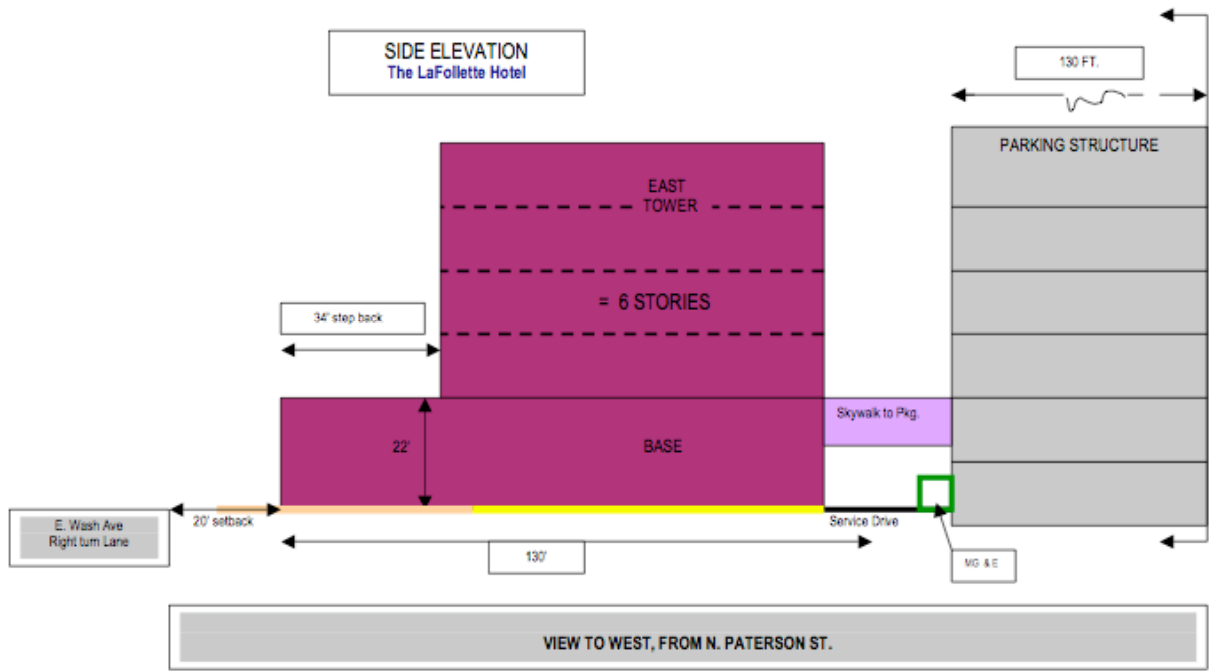


FRONT ELEVATION
The LaFollette Hotel
Parking Structure Behind



Dimensions are estimates Not to scale

SIDE ELEVATION
The LaFollette Hotel





Example of patio stone work

Example of skylight between towers





Flexible Restaurant space can overlap into lobby with skylight above for large groups, weddings, etc. Large family style table looks into kitchen through smoked, sliding glass panels.



Restaurant serves locally sourced “slow food” (some from the rooftop garden) and is classy yet comfortable and can go from casual to white-linen semi-formal in an eye blink. Coffee bistro with home-baked goods and take-away in the lobby adjacent



Loft style rooms range in size from 200 to 420 Sq Ft. The emphasis is on comfort and the overall experience, rather than ostentatious luxury

<http://www.google.com/imgres?imgurl=http://blog.boycecom.com/files>



http://www.nylofhostel.com/english/media_gallery/

Hostel rooms are modern, comfy and bright.



Entertain your friends in your own home and then send them to The LaFollette at the end of the evening. Meet up the next morning in one of the hostel's Gourmet Kitchens, in the hotel's restaurant or coffee bistro



Example of walk-out Japanese Garden (between hotel towers)