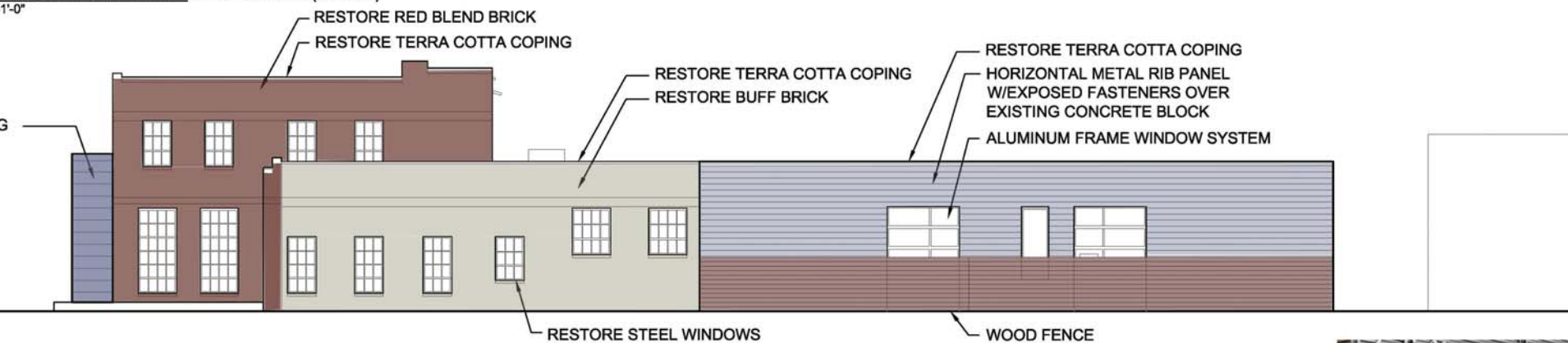


① EAST WASHINGTON AVENUE ELEVATION (SOUTH)
1/8"=1'-0"



FLAT-LOCK STANDING SEAM METAL PANEL



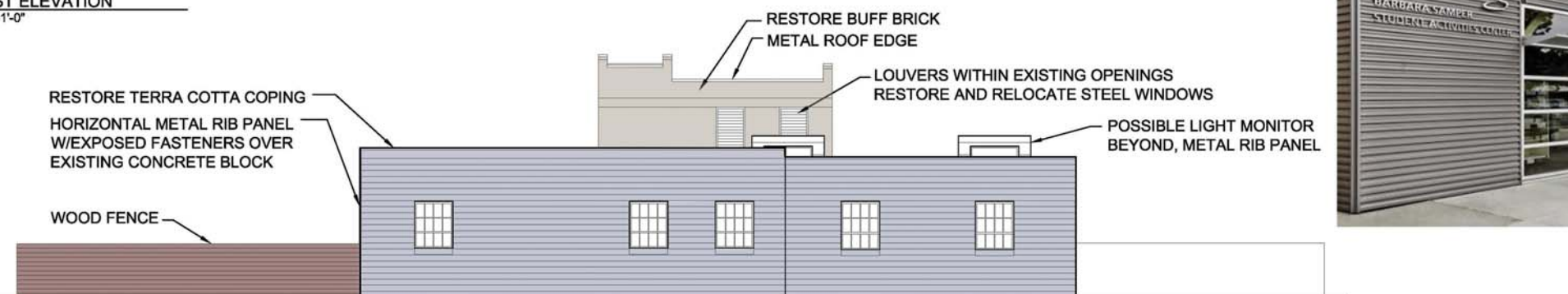
② EAST ELEVATION
1/8"=1'-0"



RESTORE TERRA COTTA COPING

HORIZONTAL METAL RIB PANEL W/ EXPOSED FASTENERS OVER EXISTING CONCRETE BLOCK

WOOD FENCE



③ NORTH ELEVATION
1/8"=1'-0"



HORIZONTAL METAL RIB PANEL W/ EXPOSED FASTENERS AND METAL COPING OVER EXISTING CONCRETE BLOCK

ALUMINUM FRAME WINDOW SYSTEM

RESTORE TERRA COTTA COPING

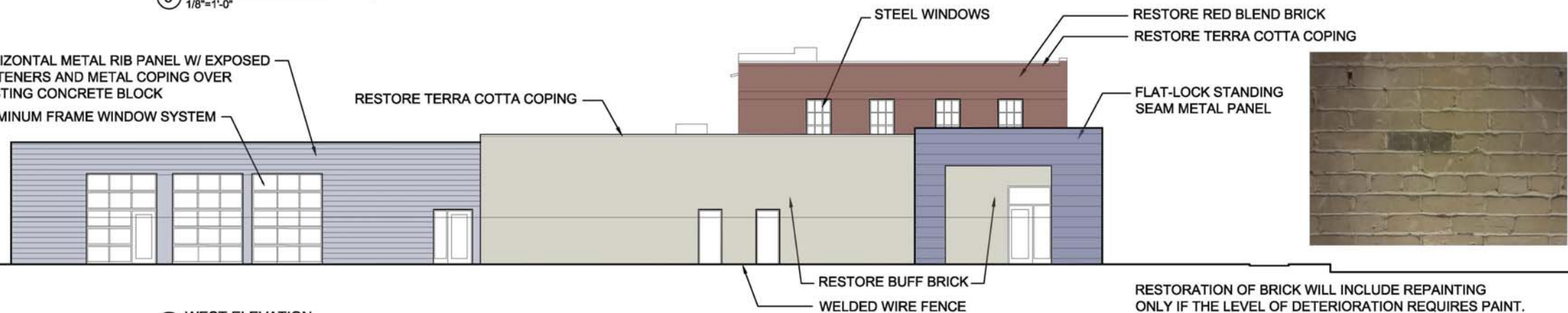
STEEL WINDOWS

RESTORE RED BLEND BRICK

RESTORE TERRA COTTA COPING

FLAT-LOCK STANDING SEAM METAL PANEL

④ WEST ELEVATION
1/8"=1'-0"



RESTORATION OF BRICK WILL INCLUDE REPAINTING ONLY IF THE LEVEL OF DETERIORATION REQUIRES PAINT.

STEEL WINDOWS WILL BE RESTORED. REPLACEMENT OF STEEL WINDOWS ONLY WHERE PREVIOUSLY REMOVED.

PROJECT
DANE COUNTY
DAY RESOURCE CENTER
1326 E WASHINGTON AVE
MADISON WISCONSIN

DRAWING
EXTERIOR ELEVATIONS

DATE
02.02.16

A1.0