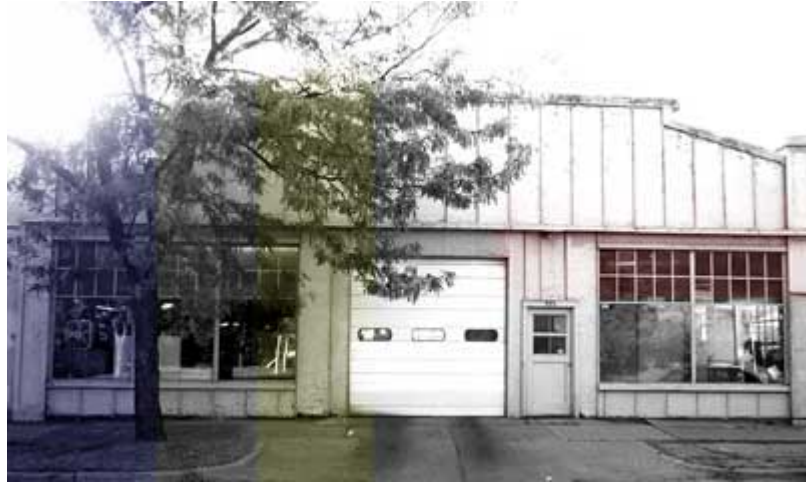


800 Block  
Development  
Website



### Architecture Discussion Page

Below are examples of Madison architecture. These existing projects may be useful to determine aesthetic qualities desired in the 800 block development project. Click on the image for a larger view. *NOTE: some buildings in the condo section might actually be apartments and vice versa.*

#### [Architecture outside Madison](#)

There is discussion that Madison does not have examples of architecture that befits the artistic nature of the Tenney Lapham/Old Marketplace neighborhoods. We welcome photos or renderings of buildings that could serve as examples of "outside the box" development. Given the development will be an entire block, most opinion is that the E. Mifflin street side that fronts Reynolds Park should be single family. Perhaps this "face" to the neighborhood could have a "softer" tone, while other, commercial buildings on the block could be more adventurous.

#### Townhouse/Row House



townhouse1



townhouse2



townhouse3



townhouse4

Condos



condo1



condo2



condo3



condo4



condo5



condo6



condo7



condo8



condo9



condo10



condo11

Apartments



apt1



apt2



apt3



apt4



apt4



apt5



apt6



apt7



apt8



apt9



apt10



apt11



apt12



Mixed Use



mix1



mix2



mix3



mix4



mix5



mix6

Commercial



commercial1



commercial2



commercial3

Contact: David Waugh, [Waugh@Morningwoodfarm.com](mailto:Waugh@Morningwoodfarm.com)

Last updated Oct. 13,2004