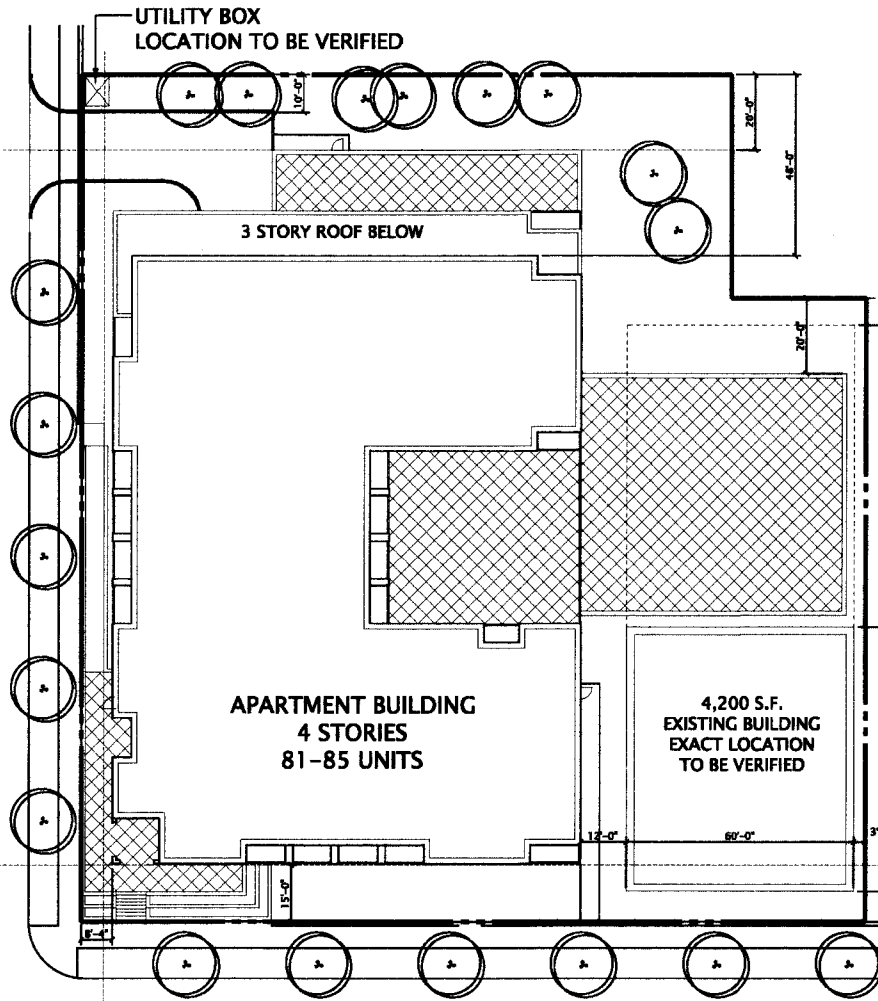


NORTH FEW STREET



NOTE:
THIS DIAGRAM IS FOR INITIAL DESIGN ONLY. ALL DIMENSIONS AND OTHER ITEMS TYPICALLY DOCUMENTED BY AN OFFICIAL SITE SURVEY INCLUDING, BUT NOT LIMITED TO, LOCATIONS OF PROPERTY LINES, EASEMENTS, UTILITIES, AND STRUCTURES SHALL BE LOCATED AND DOCUMENTED BY A SURVEYOR LICENSED/REGISTERED IN THE STATE OF WISCONSIN.

EAST WASHINGTON AVENUE



FEW STREET REDEVELOPMENT
SCHEMATIC DESIGN