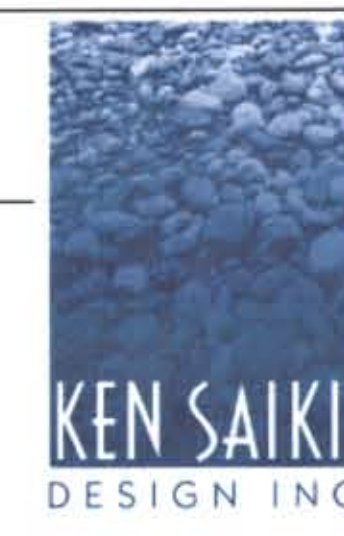


Consultant

Notes  
Date  
April 7, 2009

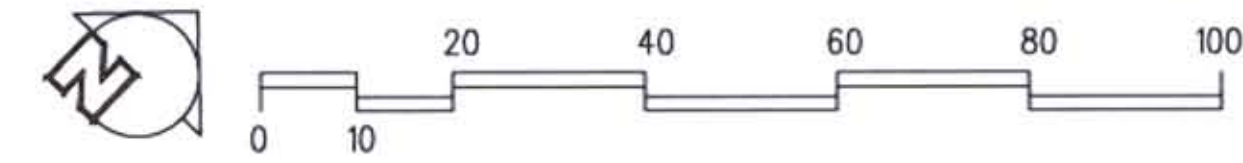


303 S. PATERSON  
SUITE ONE  
MADISON, WI 53703  
Phone: 608 951-3600  
Fax: 608 951-2330  
www.ksd-la.com

Key	Botanical Name	Common Name	Quantity	Size	Spec	Comments
<b>Deciduous Trees</b>						
CC	<i>Corylus capliniana</i>	Musclewood		1.5' cal.	B&B	
CO	<i>Carya ovata</i>	Shagbark Hickory		3' cal.	B&B	
CD	<i>Gymnocladus dioica 'Espresso'</i>	Espresso Kentucky Coffeetree		3' cal.	B&B	
QM	<i>Quercus macrocarpa</i>	Chinkapin Oak		2' cal.	B&B	
QR	<i>Quercus rubra</i>	Red Oak		3' cal.	B&B	
	<b>TOTAL</b>		0			
<b>Ornamental Trees</b>						
AG	<i>Amelanchier x grandiflora 'Cole'</i>	Cole's Select Serviceberry		6' ht.	B&B	multi-stem
CI	<i>Crataegus crusgalli var. inermis</i>	Thornless Cockspur Hawthorn		1.5' cal.	B&B	
VP	<i>Viburnum punctatum</i>	Blackhaw Viburnum		6' ht.	B&B	multi-stem
	<b>TOTAL</b>		0			
<b>Evergreen Trees</b>						
PG	<i>Picea canadensis 'Densata'</i>	Black Hills Spruce		8' ht.	B&B	
	<b>TOTAL</b>		0			
<b>Deciduous Shrubs/Vines</b>						
Am	<i>Aronia melanocarpa 'Morton'</i>	Iroquois Beauty Black Chokeberry		2' ht.	cont.	
Cb	<i>Cornus alba 'Ballhalo'</i>	Ivory Halo Dogwood		3' ht.	cont.	
CI	<i>Cornus alternifolia 'Muskogee'</i>	Muskogee Gray Dogwood		1.8' ht.	cont.	
Pa	<i>Physocarpus opulifolius 'Seward'</i>	Summer Wine Eastern Ninebark		2' ht.	cont.	
Sp	<i>Salix purpurea 'Nana'</i>	Arctic Blue Leaf Willow		1.8' ht.	cont.	
	<b>TOTAL</b>		0			
<b>Evergreen Shrubs</b>						
Jk	<i>Juniperus chinensis 'Kaitay'</i>	Kaitays Compact Pfitzer Juniper		18" spd.	cont.	
Pp	<i>Picea pungens 'GloUCE Globosa'</i>	Globe Blue Colorado Blue Spruce		2' ht.	cont.	
To	<i>Thuja occidentalis 'Woodwardii'</i>	Woodward Globe Arborvitae		24" ht.	cont.	
	<b>TOTAL</b>		0			
<b>Perennials/Grasses/Groundcovers</b>						
at	<i>Asclepias tuberosa</i>	Butterfly Weed		1 qt.	cont.	
cn	<i>Calamagrostis nemoralis ssp. Nepeta</i>	Nepeta Calamint		1 qt.	cont.	
cl	<i>Chasmodon latifolium</i>	Northern Sea Oats		1 qt.	cont.	
ob	<i>Geranium cantabrigiense 'Blokovo'</i>	Blokovo Geranium		1 qt.	cont.	
hm	<i>Hakonechloa macra</i>	Japanese Forest Grass		1 qt.	cont.	
hg	<i>Hosta 'Golden Tara'</i>	Golden Tara Hosta		1 qt.	cont.	
sn	<i>Salvia nemorosa 'May Night'</i>	May Night Salvia		1 qt.	cont.	
ss	<i>Schizanthus lanceolatus</i>	Little Bluestem		1 qt.	cont.	
sc	<i>Sesleria caerulea</i>	Blue Moor Grass		1 qt.	cont.	
pr	<i>Panicum virgatum 'Rotstrahlbusch'</i>	Red Switch Grass		1 qt.	cont.	
sh	<i>Sporobolus heterolepis 'Tara'</i>	Tara Prairie Dropseed		1 qt.	cont.	
	<b>TOTAL</b>		0			



Landscape Plan  
1" = 20'-0"



Revisions  
Plan Commission Submittal - February 18, 2009  
UDC - March 18, 2009  
April 7, 2009

Project Title  
City Row Townhouse  
Apartments

604-630 East Johnson St.  
309-323 E. Blair St.  
609-625 E. Gorham St.  
Drawing Title  
Landscape Plan

Project No. 0820 Drawing No. L-1.1

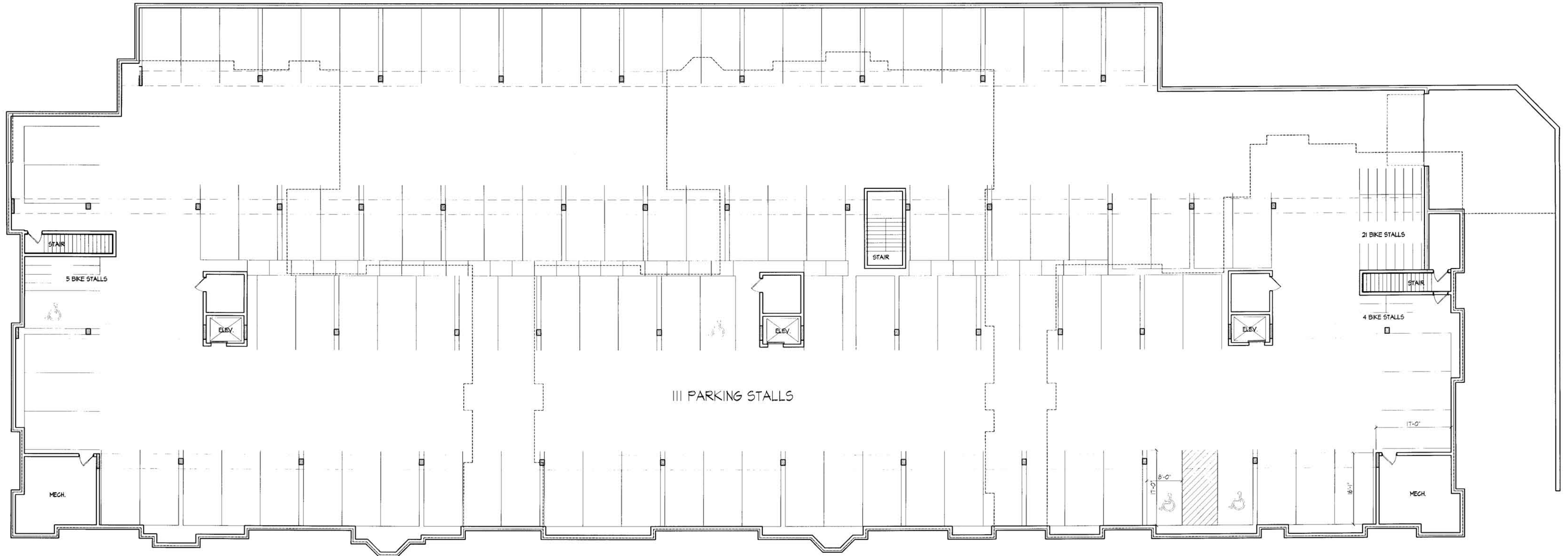
This document contains confidential or proprietary information of Knothe & Bruce Architects. Neither the document nor the information herein is to be reproduced, distributed, used, or disclosed, either in whole or in part, except as specifically authorized by Knothe & Bruce Architects. Knothe & Bruce Architects is a Limited Liability Company of Wisconsin.





Rear Elevation





**BASEMENT FLOOR PLAN**  
 9/82' x 1'-0"

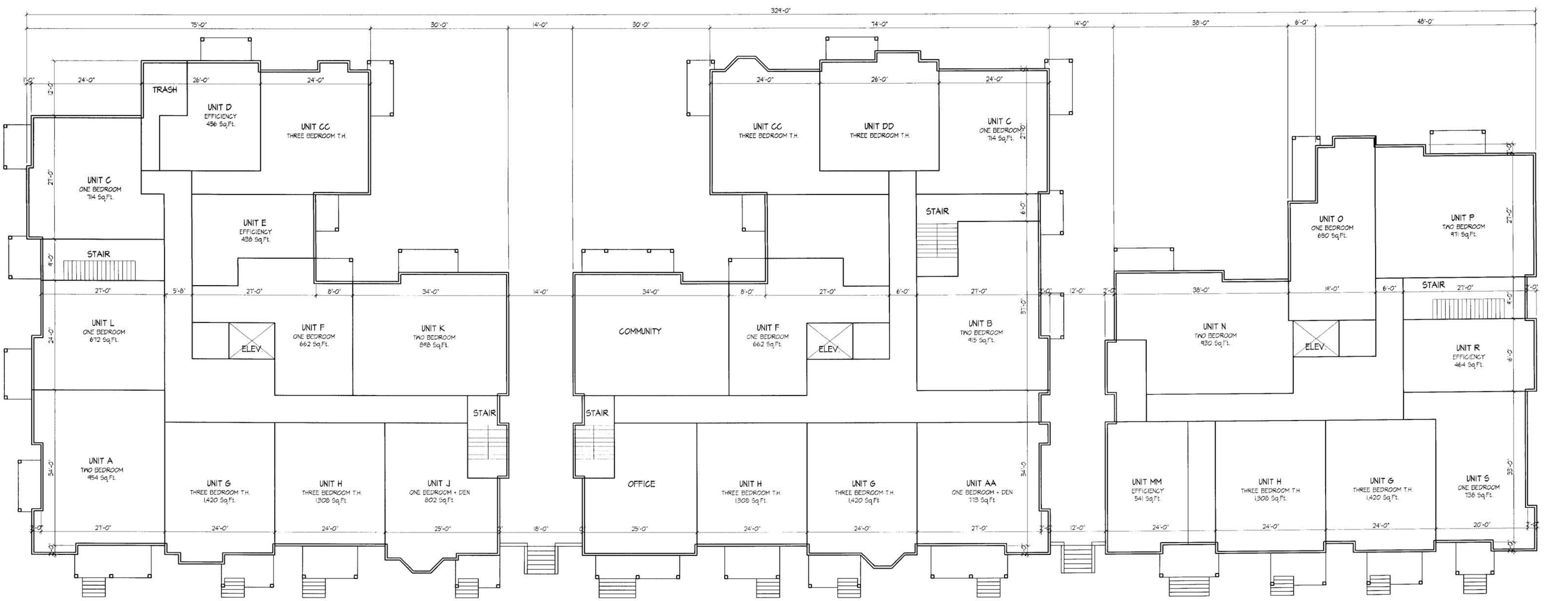
Project Title  
**City Row Townhouse  
 Apartments**

604-630 E. Johnson Street &  
 309-323 N. Blair Street  
 609-625 E. Gorham Street

Drawing Title  
**Basement Floor Plan**

Project No. Drawing No.  
**0820 A-1.0**

This document contains confidential or proprietary information of Knothe & Bruce Architects. Neither the document nor the information herein is to be reproduced, distributed, used, or disclosed, either in whole or in part, except as specifically authorized by Knothe & Bruce Architects. Knothe & Bruce Architects is a Limited Liability Company of Wisconsin.



**BUILDING #1**

UNIT MIX:	Count
EFF.	3
STUDIO LOFT	3
ONE BEDROOM	10
ONE BED + LOFT	3
LOFTED TWO BED	4
TWO BEDROOM	5
THREE BED T.H.	3

31

**BUILDING #2**

UNIT MIX:	Count
EFF.	2
STUDIO LOFT	5
ONE BEDROOM	6
ONE BED + DEN	1
ONE BED + LOFT	3
LOFTED TWO BED	3
TWO BEDROOM	5
THREE BED T.H.	4

29

**BUILDING #3**

UNIT MIX:	Count
EFF.	3
STUDIO LOFT	3
ONE BEDROOM	6
ONE BED + LOFT	2
LOFTED TWO BED	2
TWO BEDROOM	5
THREE BED T.H.	2

23

UNIT MIX:	Count
EFF.	8
STUDIO LOFT	11
ONE BEDROOM	22
ONE BED + DEN	1
ONE BED + LOFT	8 (ONE BATH)
LOFTED TWO BED	4 (TWO BATH)
TWO BEDROOM	15
THREE BED T.H.	4

83

**FIRST FLOOR PLAN**  
 3/32" = 1'-0"

Project Title  
**City Row Townhouse Apartments**

604-630 E. Johnson Street &  
 309-323 N. Blair Street  
 609-625 E. Gorham Street

Drawing Title  
**First Floor Plan**

Project No. **0820** Drawing No. **A-1.1**

This document contains confidential or proprietary information of Knothe & Bruce Architects. Neither the document nor the information herein is to be reprinted, distributed, used or disclosed, either in whole or in part, except as specifically authorized by Knothe & Bruce Architects. Knothe & Bruce Architects is a Limited Liability Company of Wisconsin.





**SOUTHEAST ELEVATION (E. JOHNSON STREET)**  
3/8" = 1'-0"



**NORTHWEST ELEVATION (E. GORHAM STREET)**  
3/8" = 1'-0"



**SOUTHWEST ELEVATION (N. BLAIR STREET)**  
3/8" = 1'-0"

Project Title  
**City Row Townhouse  
Apartments**

604-630 E. Johnson Street &  
309-323 N. Blair Street  
609-625 E. Gorham Street

Drawing Title  
**Building Elevations**

Project No. 0820 Drawing No. A-2.1

This document contains confidential or proprietary information of Knothe & Bruce Architects. Neither the document nor the information herein is to be reproduced, distributed, used or disclosed, either in whole or in part, without the specific authorization of Knothe & Bruce Architects. Knothe & Bruce Architects is a Limited Liability Company of Wisconsin.





East Johnson Street