

T E N N E Y - L A P H A M N E I G H B O R H O O D A S S O C I A T I O N N E W S L E T T E R A U T U M N 1 9 8 9

LAPHAM SCHOOL REBORN

STUDENTS RETURN A DECADE LATER

Increase Lapham would be pleased. The school, named in his honor, has once again opened its doors to children for public instruction.

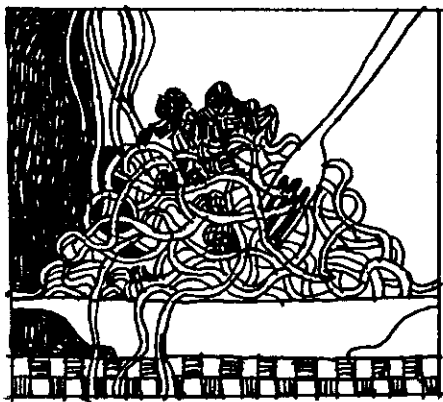
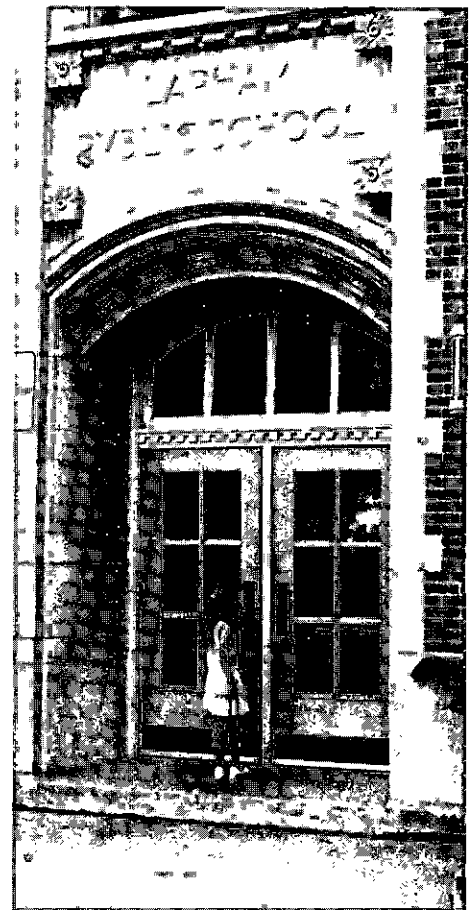
In an effort to resolve the overcrowding at Marquette Elementary, the Board of Education voted last winter to reopen Lapham Elementary School. This year, kindergartners from the Marquette Elementary attendance district will attend classes at Lapham School.

A week before the first day of school kindergartners and parents had a "practice day." Each child had a chance to see what it was like to walk or ride the bus to school. After an exciting arrival, children and

parents met in the Auditorium and were greeted by their principal, teachers, support staff, and even a couple of School Board members. After brief introductions and lots of new information to digest, everyone was invited to visit the classrooms and tour the other school rooms.

Nervous faces melted into smiles as children ran to check out a new aquarium full of fish, find their name painted on a huge "California Raisin" guy, or scramble up the steps of one of the three lofts. Teachers, working long hours over the past few weeks, had magically transformed empty rooms into rooms full of colors, shapes, textures, numbers, and letters.

continued on page 6



ANNUAL MEETING & DINNER

TLNA will hold its Annual Meeting and Spaghetti Dinner on Sunday, Sept. 17, at Christ Presbyterian Church, 944 E. Gorham. Dinner begins at 5:00 pm and will be followed by the election of officers and discussion of any topics proposed by members. A-L: please bring a salad bar item; M-Z : a dessert to pass. Cost of the dinner: \$2.50 adults, \$1.00 children.

1988-89 TLNA NEIGHBORHOOD COUNCIL

PRESIDENT	Richard Linster	432 Sidney	251-1937
VICE PRESIDENT	Shaun Abshere	1038 E. Dayton	255-1734
SECRETARY	Sue Fieber	461 N. Few	251-3909
TREASURER	Martha Crawford	1130 E. Dayton	251-0805
BUSINESS	Venessa Zakana	908 E. Gorham	255-9290
	Teena Browder	855 E. Johnson	256-3620
EDUCATION	Richard March	441 N. Few	255-4102
HOUSING	Valerie Mellerop	1052 E. Gorham	255-4524
MEMBERSHIP	Richard Linster	432 Sidney	251-1937
PARKS	Janet Weber	334 Marston	256-6639
	Bob Kasdorf	"	"
PUBLICITY	Rob Latousek	407 N. Brearly	255-6979
SOCIAL	Pam Polenz	1221 Elizabeth	256-7646
TRANSPORTATION	Gene Becker	223 N. Baldwin	257-4201
AREA A Rep.	Carol Weidel	1237 E. Dayton	257-4608
AREA B Rep.	Ken Richard	215 N. Brearly	255-2573
AREA C Rep.	Susan Lower	456 Jean	257-8691

ELECTED GOVERNMENT REPRESENTATIVES

Alder	David Wallner	419 Jean	256-2958
County Supervisor	Kathleen Nichols	113 N. Paterson	251-0068
State Assembly	David Clarenbach	422N State Capitol	266-8570
State Senate	Fred Risser	235S State Capitol	266-1627
(State legislators:	P.O. Box 7882	Madison, WI 53707-7882)	
U.S. House of Rep.	Robert Kastenmeier	119 Martin L. King (53703)	264-5206
U.S. Senate	Robert Kasten	25 W. Main (53703)	264-5366
	Herbert Kohl	14 W. Mifflin #312 (53703)	264-5338

The Newsletter of the Tenney-Lapham Neighborhood Association is published quarterly and distributed without charge to all households in the Tenney-Lapham Neighborhood (delineated by Lake Mendota, North Livingston Street, East Washington Avenue, and the Yahara River). Requests for information regarding submissions and advertising may be directed to the Newsletter Editor, TLNA, P.O. Box 703, Madison, WI 53701.

PRESIDENT'S REPORT

Since this column will appear near the end of my current term as President, I should like to review the progress of the TLNA over the last year.

THE ISSUE for our neighborhood this year has been **Lapham School**. One year ago no one could have expected that Lapham would have reopened today (August 28th, as I write) for kindergarten. During an extremely tense situation, our members, residents, parents and many friends acted responsibly and showed great patience. A good start has been made and though it is too early to see too far ahead, I think the signs augur well.

The May 21 **Open House**, the work of our Housing Subcommittee (and resulting systematic building inspection), the planning for the Welcome Garden and its sign, and many other efforts have all come together to enhance and upgrade our neighborhood. Many people, too numerous to mention here, are responsible for this. I have no doubt that these, and similar efforts will continue.

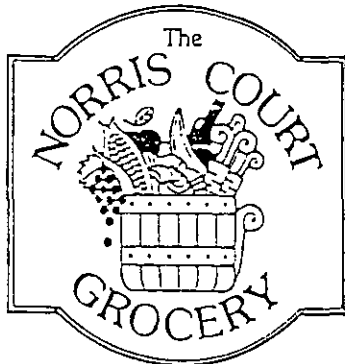
Our excellent **Social Meetings**, active recruitment of members and high level of participation strengthen the fabric of our neighborhood. This, coupled with work done on creating an **Isthmus Neighborhoods Council of Associations**, gives greater support to us individually while making us all a force to be reckoned with.

All our committees are active and involved with ongoing tasks. There is room on every committee for **YOU--YOUR IDEAS, YOUR HELP, YOUR CRITICISM**. The TLNA (and other groups) will rise or fall due to the efforts of many, so do your bit.

Our **Annual Meeting** will be held on **Sunday, September 17**. Please come and meet your neighbors, eat spaghetti and vote in a new council. Help build our future!

Yours for the TLNA,

Richard Linster



CINNABON!!

We now have Cinnabon Rolls--Fresh from their Eastowne Bakery \$1.49

EVON SNACKS

9 different varieties (trail mix, yogurt, nuts, carob, dried fruit, etc.) \$2.99/lb.+tx

* TYME MACHINE *

NOW OPEN FOR USE! CONVENIENT, IN-STORE LOCATION--NO-HASSLE CASH WHEN YOU NEED IT

FRESH DELI SANDWICHES \$1.19-2.49

VIC'S POPCORN--3 Flavors \$1.79

HUBER Returnable bottles 8-pak \$1.89+tx

OLD MILW Returnables Case \$5.67+tx

VIDEOTAPES--NO MEMBERSHIP FEE
DAILY RENTAL \$1.99

Monday thru Saturday 7am-11pm
Sunday 8am-11pm

902 East Johnson 256-2075

BUSINESS

Welcome to the Neighborhood

U-FRAME-IT 857 East Johnson Street

Denise Masters wanted to open a second shop for a long time but needed to find the right neighborhood in which to expand. Earlier this year she was attracted to the corner of East Johnson and Paterson Streets and hoped for an opening. She was in luck -- and the Tenney-Lapham neighborhood has gained an illustrious new business. After an extensive renovation, the former butcher shop became *U-Frame-It*, a full-service framing store.

U-Frame-It's services include picture framing, foamcore dry-mounting, cut matting, conservation framing and shadow-boxing. Frames can be created for a host of materials, including needlework, batik, and fabric, and for unusual items, such as fans. Denise and her staff will work with the customer to match a picture to the proper frame. Although *U-Frame-It* has phased out its "build your own frame" service, customers can still use *U-Frame-It's* materials to fit their picture into an existing frame. Cards and prints are sold, and they frame in neon, too!

When it comes to frames, Madisonians "go for the simple stuff," Denise says. She believes in "making the art stand out more than the frame." *U-Frame-It* does much of its business in plain metal frames. Turnaround time for a framing job can be anywhere from 24 hours to a week.

Businesses big and small, with a variety of needs, are clients. *U-Frame-It's* latest project for Tommy Bartlett, the Wisconsin Dells impresario, was the framing of memorabilia including a bronze medal from the 1988 Winter Olympics in Calgary where he was an announcer. Dotty Dumpling's Dowry and Meriter Hospital are also clients.

Denise is a third-generation picture framer, and members of her family still own several frame shops in Milwaukee. She is also a practicing artist who works primarily in torn paper and acrylic paints; examples of her work are displayed at the East Johnson Street store. A Milwaukee native, Denise came to Madison to attend the university and opened the first *U-Frame-It* at 3740 University Avenue in 1975. The two stores now employ 10-12 people altogether, including several university students. Denise moved back to Milwaukee about five years ago when she married and has spent several days a week commuting to Madison ever since. However, her husband Ron has just retired from the City of Milwaukee, so they will probably be relocating to Madison in the near future.

Denise feels that the neighborhood has made *U-Frame-It* welcome. "Since the store opened this summer," she says, "the response has been great. And since the students started coming back to town, the neighborhood has really gotten lively!" She also enjoys Burnie's Rock Shop right across the street and the personal touch of her landlords at Cork 'n Bottle, Teena Browder and Connie Kaeser.

U-Frame-It's hours are Monday-Thursday, 10-8; Friday and Saturday, 10-6; and Sunday, 12-5.



Papendieck's Upholstery

821 E. Johnson St.
Madison, WI 53703
Tel: 255-5404

FOR THE OFFICE, HOME, & RESTAURANT
Greg Papendieck, Owner



Quality hardwood furniture
Handcrafted to order

1257 E. Johnson 251-2441

LET SLEEPING DOGS LIE
Call the veterinarians that make

HOUSECALLS

DR. DEB SCHROEDER



CITYWIDE PET CLINIC

255-2977

CALENDAR OF EVENTS

SEPTEMBER

- 4 MON Labor Day
- 11 MON TLNA Council Meet.
7:30 pm, Lapham School, Auditorium
- 12 TUE Marquette-Lapham Parent-Teacher Group (PTG) Open Meeting
7:00 pm, Marquette LMC (Library)
- 13 WED Welcome Garden Planning Meeting
8:00 pm, Mildred's Sandwich Shop
- 17 SUN 12th Annual Willy Street Fair
11am-7pm, 800-1100 Williamson St.
- 17 SUN Annual Meeting Spaghetti Dinner
5:00 pm
Christ Presb. Church Fellowship Hall

- 26 TUE School Open Houses:
6:45 pm, Lapham
7:30 pm, Marquette

OCTOBER

- 1 SUN Whole Earth Foods Open House
12:00-5:00 pm
817 E. Johnson St.
- 8 SUN Family Center Open House
12:30-3:30 pm
2120 Fordem Ave.
- 9 MON TLNA Council Meet.
7:30 pm, Lapham School, Auditorium (Columbus Day)
- 10 TUE Marquette-Lapham PTG Meeting
7:00 pm, Location to be announced
- 31 TUE Halloween

NOVEMBER

- 7 TUE Election Day
- 13 MON TLNA Council Meet.
7:30 pm, Lapham School, Auditorium
- 14 TUE Marquette-Lapham PTG Meeting
7:00 pm, Location to be announced
- 15 WED Newsletter Deadline (Winter issue)
Articles, advertising, notices due (PO Box 703, Madison, WI 53701)
- 23 THU Thanksgiving Holiday

DISCOVER

A
**Great Neighborhood
Grocery**

THAT CAN PROVIDE YOU WITH:

- Nutritious Packaged Dinners
- Wholesome Snacks
- Fresh Produce Daily
- Bulk Grains, Flours, Pasta & Coffee
- Over 200 Herbs, Teas, Spices



in a friendly, relaxed atmosphere!

PLUS! We offer a 10% discount for:

- buying food in bulk quantities
- volunteering (4-6 hrs. per mo.)
- senior citizens



**OPEN DAILY
SUNDAYS TOO!**

**WHOLE EARTH
NATURAL FOODS**
817 E. Johnson, Madison
256-8828

Present this
coupon and receive
15% off
your next purchase of
\$10.00 or more

expires sept. 30th

SWAN & SKUNK AWARDS

This summer the "Welcome to the Tenney-Lapham Neighborhood sign was installed at the intersection of Baldwin and Gorham Streets. Now it would really be nice if Art Luedtke and his Faircrest Management could just help us maintain that nice first impression at the gateway to the neighborhood. Practically the first thing a visitor notices are his two houses at 1128 and 1126 East Gorham. Unfortunately, right now they are covered with dirt, mismatched exterior siding, and other signs of "blue light special" repairs. Happily, though, one of the tenants is trying to improve the looks by displaying many pots of marigolds on the front steps.

Faircrest's lack of concern for our neighborhood's appearance is further evidenced by the run-down house he is trying to sell at 1012 East Gorham. Three skunks to Mr. Luedtke.

Three swans go to the next door neighbor at 1010 East Gorham. This beautiful home belongs to Ken and Gay

Davidson Zielske. Their sensitivity and concern for quality is also shown by the care they of their other two properties just across the street (1011 and 1013 East Gorham). The time and effort that they put into their properties is appreciated by all of us who walk and drive down Gorham.

EDUCATION

continued

Like a kindergarten class should be, the rooms are bright and invite children to want to learn.

Other rooms at Lapham Elementary are a small Library, a cheerfully arranged Art Room, a Music Room (the Auditorium stage), a nurse's station, and offices for the principal, secretary and support staff. The Cafeteria, Gym, and Auditorium will also be used.

We hope to have an Open House for all residents of the Tenney-Lapham neighborhood so that everyone has a chance to see the all new Lapham Elementary School.

Claire Ann Holm

Find out for yourself why everyone's been talking about

Telco Community Credit Union!

In the Third Lake Market,
944 Williamson Street

Bring this ad to Telco Community, open a checking account, and get your first box of checks FREE!*

That's an \$11.60 value!

You'll enjoy a full line of banking services at Telco Community.

- Interest-bearing checking and savings accounts
- MasterCard and Visa
- TYME
- MARS (Bank by phone 24 hours a day!)
- Affordable auto and personal loans
- Home Mortgages
- Money Orders...AND MORE!

Telco%mmunity

Your Neighborhood Credit Union!

In the Third Lake Market, 944 Williamson Street

258-7000



*Offer expires 10/31/89. Membership required.



ALDER'S REPORT

LAPHAM REOPENS! I recently toured the classrooms at Lapham and talked to several teachers prior to the long-awaited reopening of the school. The rooms are large, bright, airy and charmingly decorated, and were awaiting the chatter and hubbub of the new students. Good luck to students, parents and staff as we jump into a new school year at our "new" neighborhood school.

PARKS NEWS UPDATE: As the aldermanic rep. on the city's People For Parks Committee, I recently received information on an interesting trust fund that can provide assistance for park flower gardens and plantings. It's called the Marguerite Pohle Trust Fund, and the interest on the funds can be used by individuals and neighborhood groups willing to take on a flower bed project in a city park. The money can be used for plants and maintenance. If you're interested in this innovative idea, give me a call at 256-2958, or contact Bill Bauer in the Parks Division at 267-4921.

The Parks Division is also sponsoring a fall volunteer parks cleanup throughout the city. Parks staff will provide dumpsters and other equipment if residents will provide a little time and energy. Call Lori Bastean at 266-4711 if you're interested in lending a hand.

One final parks note: I've been working with Madison Mutual Housing Association and the Emerson neighborhood on a new park that is taking shape as part of MMHA's new Avenue housing project at 1954 E. Washington. The new park will be open to all city residents. It will be fully accessible and will include play equipment, a sandbox area, picnic space and a stone sculpture dedicated in memory of U.W. Prof. James Graaskamp. I've taken the initial steps to see that MMHA receives a major grant of city matching funds to make this important new park become a reality. And it's only a few blocks from the Tenney-Lapham neighborhood.

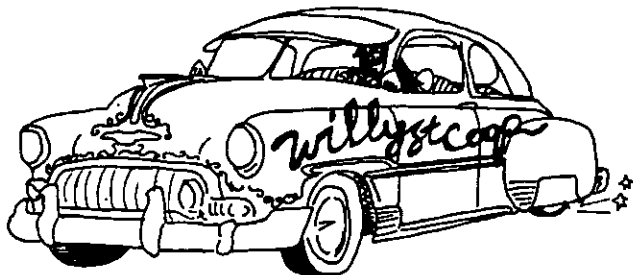
The park will be dedicated at 3 p.m. on Sunday, Oct. 15. Stop by and take a look. And give Susan Hobart a call at the MMHA office if you'd like to make a tax-deductible contribution.

continued on page 13



*A Full-Line, Full Service
Neighborhood Grocery Store
& Wisconsin's Largest
Natural Foods Store!*

*The Finest Selection of Natural &
Organically-Grown Foods in the Area!*



*Become a Member and Save!
Volunteer for an Additional Discount!*



*Announcing Willy Street Co-op's Home
Delivery Service for the Elderly &
Persons with Disabilities -*

*If you know of someone who lives on Madison's
Near-East Side (the Isthmus between Blair St. and
Schenk's Corners), and who is unable to come for
themselves, we may be able to help!*

For more information please call the Co-op.

Williamson St. Grocery Cooperative
1202 Williamson Street Madison 251-6776

OPEN 8 a.m. to 9 p.m. EVERY DAY

ANYONE CAN SHOP ANYONE CAN JOIN

PAMELA PATROU

*original designs
tailoring
custom clothing
alterations*

*221 N. Paterson
Madison, WI 53703
(608)257-9006*

1990 CITY BUDGET SURVEY--2ND DISTRICT

The City Council is beginning to review the Mayor's proposed 1990 budget. The Council will take final action on the budget before Thanksgiving. In order to provide me with some guidance on projects and programs of importance to 2nd District residents, I'd urge you to fill out the following survey. When you're done, mail it to me at 419 Jean St., Madison, WI 53703. I'll try to publish the results in future neighborhood newsletters. Thanks for your time and effort.

Below I've listed a series of major city services and programs. Using a check mark in the appropriate column, indicate your preference for an INCREASE, DECREASE, OR SAME LEVEL for funding that service for next year. (Keep in mind that inflation is running at approximately 5% for this year.)

	INCREASE	DECREASE	SAME LEVEL
Street Repairs			
Metro Bus Service			
Bike Facilities			
Parks Facilities			
Parks Maintenance			
Day Care			
Senior Services			
Health Care			
AIDS Funding			
Police Department			
Fire Department			
Trash Pick-up			
Building Inspection			
Housing Rehabilitation Loans			
Low-Interest Homebuyer Loans			
Recycling Programs			
Council Members Salaries (now \$4,000)			
Downtown Parking Ramps			

In the following space, please make comments about specific services that you feel the city should improve, cut, or change:

The following questions relate to specific topics that the City Council has been discussing in the past year.

1. Should the city fund and build swimming pools? (Each major pool will cost from \$1.5 to \$2 million dollars.) If yes, how many? And in which locations?
2. Should the city fund and build an Aquatic Facility (similar to the Union Terrace) in Law Park? (Such a facility could cost up to \$4 million, with the city share likely to be up to \$2 million.)
3. Should the city continue to explore the option of building a Convention Center? If yes, would you support any city funding (room tax funds, TIF financing and/or general tax revenues) to build such a facility?
4. Periodically the issue surfaces of reducing the size of the City Council from 22 members down to approximately half that number. Would you support reducing the size of the Council? Yes or No? If yes, to what size?
5. If the Council were reduced in size to approximately 11 members, what should their salary level be?

Each year, after discussions with neighborhood association leaders and other constituents, I set a series of goals to work on for the 2nd District. Are there specific goals and issues you'd like me to work on during the coming year? (Please explain your choices on a separate sheet of paper, if necessary.)

BUSINESS

Still wholesome after all these years (20, to be exact)

WHOLE EARTH NATURAL FOODS 817 East Johnson Street

Whole Earth, Tenney-Lapham's own natural foods store, is celebrating its twentieth anniversary. It's a time for reflection on the past as the store looks to the future.

"This store came out of the whole self-help movement," says Venessa Zakana, *Whole Earth's* senior staff member, who is celebrating her ninth year on the staff. The folks who started *Whole Earth*, with assistance from the Mifflin Street Co-op, even wrote to *The Whole Earth Catalogue* for permission to use the name. *Whole Earth* began as a cooperative with a Board of Directors, but along the way became a not-for-profit organization and a workers' collective. Now the staff, which currently numbers 6 people, is the Board of Directors.

The co-op's original philosophy promoted *total* self-help. For many years its library housed in a building in back of the store, which now serves as offices and storage space, contained books on everything from gardening to Eastern mysticism to political campaigns. The library's books were sold several years ago, and over the years the store's philosophy has become more and more focused on food as a way to better living.

Whole Earth's guiding philosophy is to provide its customers with food in its most basic state, or "clean" food, Venessa says. The staff works to find foods that are as fresh, unprocessed, natural and organic as possible. It also considers itself a neighborhood grocery store and tries to carefully balance its concern for natural foods with the diverse needs of the neighborhood.

Whole Earth's major distributor is North Farms Cooperative, based in Madison, which supplies the store with much of its dry goods and

grains. Produce comes from such distributors as Golden Produce, another Madison business. *Whole Earth* puts a great deal of emphasis on buying from and working with other local and small businesses. They're always looking for new items or trends which come to them through a variety of sources, including the Dane County Farmer's Market.


Whole Earth retains close ties to the Mifflin Street Co-op and works on issues of mutual concern with all the co-ops in town. For example, several weeks ago Madison's co-ops and other natural suppliers sponsored a major ad for organic foods in the *Sunday Wisconsin State Journal*. *Whole Earth* was pleased to be involved in this effort and looks forward to more such collaborative relationships in the future.

The store's first home was at 845 East Johnson Street. Its current home was built as a grocery -- "In fact, this building has always been a grocery," says Venessa -- sometime between 1898 and 1904. It was sold to *Whole Earth's* founders in 1971 by the Schwartz family, which had operated a grocery in the building for over 25 years.

The Tenney-Lapham neighborhood and all of *Whole Earth's* customers are invited to celebrate the 20th anniversary at an **Open House on Sunday, October 1, 12-5 pm**. Refreshments and live music will be featured. "As many former *Whole Earth* staffers as we can find" will be invited to the celebration, Venessa says; she hopes that all of *Whole Earth's* friends will stop by that day to join in the festivities.

continued on page 14

DAVE ZIMMERMAN

W.O.  **Zimmerman, Inc.**

PLUMBING • HEATING
AIR CONDITIONING • SHEET METAL

811 E. JOHNSON STREET Res. 249-6773
MADISON, WISCONSIN 53703 Bus. 256-0265

Hair For You

*Free Consultation
Call For Appointment*

*Gerry Wiese
Hair Designer*

251-HAIR
217 N. Paterson
Madison, Wis. 53703

CORRECTIVE COLOR
PRESCRIPTIVE PERM
SOFTTEST CURL EVER
NO CHEMICAL ODOR

MEMBERSHIP

JOIN TLNA!

Become a card-carrying member of the Tenney-Lapham Neighborhood Association. It's easy! Send this form and some money (see below) to: TLNA, PO Box 703, Madison, WI 53701.

Annual dues (minimum):
 Adult \$ 1.00 ea.
 Senior 0.50
 Business 5.00

Additional contributions welcome!

Name: _____

Address: _____

Phone: _____

The Membership Committee has put a total of 445 members on our rolls and collected a total of \$1,475 in dues for this fiscal year (which will end September 30). A date will be announced at the Annual Meeting for a committee meeting to prepare next year's goals and plan the next recruitment drive.

NEWSLETTER STAFF

Editor Rob Latousek
 Feature Writer Anne Katz
 Copy Editors ... Marie Shipinski
 Warren Robords
 Richard Linster
 Graphics Brian McCormick
 Ad Billing Judy Jones


PROFESSIONALS COMMITTED TO THE SPORT
END OF SEASON BIKE SALE - EVERYTHING REDUCED
 ALL IN-STOCK SPORT PERFORMANCE, CITY, ALL TERRAIN BIKES REDUCED SUBSTANTIALLY

Don't Miss Out! 8th Annual FALL CLEARANCE SALE
 All Clothing, Parts, Accessories, Car Rack Systems, (Thule, Yakima, Graber)
REDUCED!
 Starts September 17th, Willy St. Fair Day!



WILLIAMSON BICYCLE WORKS
 MADISON'S CYCLING SPECIALISTS

 HOURS: M-F 10-7 THURS EVE till 8 SAT 9-5 SUN 12-5
 409 S. Few Street, Madison • (608) 255-5292



**Cork 'n Bottle
 Liquor Store**

855 E Johnson • 256-3620
 MON-SAT 9:30-9:00
 SUNDAY 10:00-9:00

A friendly neighborhood store
 with 20 years experience selling
 a large selection of domestic and
 imported Wines
 Liqueurs, and Beers

Buying or Selling?


For all your real estate needs, call
Greg Heisig
 221-8666 251-7366



Your Neighborhood Specialist in the Isthmus Area

Call from this ad and receive:

- Free market analysis on your property
- Free real estate needs analysis

WEBER Realty, Inc. 

COMMUNITY

FAMILY EXCHANGE CENTER INVITES YOU TO OPEN HOUSE

Do you remember what it is like to share your thoughts and concerns with a special friend? It feels good and makes the world seem brighter. You can be a special friend to a parent overwhelmed by stress and help make a child's world safer and brighter. Call the Exchange Center for the Prevention of Child Abuse at 241-3434 to find out more

about the volunteer parent aide program. You can make a difference for a family in your community.

The Exchange Center is part of a new complex of family-related support service agencies now occupying the recently renovated Demco building, 2120 Fordem Avenue. All five of the agencies in "The Family Center" building will be hosting an **Open House on Sunday, October 8, 12:30-3:30 pm.** There will be plenty of activities for children, so please bring them along.



Mildred's
SANDWICH SHOP

OPEN 11-10 DAILY

Beers Imported Domestic

Homemade Soups
Salads Sandwiches carryouts

827 E. JOHNSON ST. → 255-2460

SUPREME PIZZA

"PIZZA WITH A CHOICE"

Hours:
Sunday thru Thursday 11 AM-11 PM
Friday & Saturday 11 AM-12 PM
Counter Service & Carry-out
DELIVERY - 7 DAYS A WEEK, DAY & NIGHT



255-2500 912 E. Johnson

Choose from a wide variety of pizza toppings!

PIZZA	Each	Extra	White or wh. wheat crust;
SM \$ 3.95	0.90	0.80	Freebies:
MED 4.90	1.10	1.00	Thick crust
LG 6.15	1.20	1.10	Extra sauce
XLG 7.10	1.30	1.20	

SANDWICHES

Super Sub \$ 3.20	Roast Beef Sub 3.30
Veggie Sub 3.20	Prosciutto Sub 3.45
Turkey Sub 3.30	Meatball or Sausage 3.20
Pastrami Sub 3.45	Meatball or Sausage
Tuna Sub 3.30	Parmesan (w/cheese) 3.55

DINNERS

Lasagne (House specialty), meat or veggie	4.95
Meatball or Sausage Platter	4.05
Eggplant Parmesan	4.20
Spaghetti with tomato sauce	3.90
Extras: meatballs, sausage, mushrooms	0.95
Garlic Bread	1.35
Super Garlic Bread with sauce & cheese	1.95

SALADS

Dinner Salad	1.25
Antipasto 3.85	Chef Salad 3.85

TLNA Coupon \$0.50 exp.12/31/89



WEAVING WORKSHOP

920 E. Johnson St. Madison, WI 53703 (608) 255-1066

Yarns, fibers, reeds, feathers and beads;
Equipment, tools, books and classes
for weaving, knitting, spinning,
basketry and dyeing.

Hours:
Monday-Saturday 10-6
Sunday 12-4

DO-IT-YOURSELF & CUSTOM PICTURE FRAMING

DO-IT-YOURSELF & CUSTOM PICTURE FRAMING

3740 UNIVERSITY AVENUE • MADISON, WI 53705 (NEXT TO KOHL'S) • (608) 233-7717

EAST: 857 East Johnson 257-7717

ANNOUNCEMENTS

NOMINEES FOR 1989-90 TLNA COUNCIL

The Nominating Committee has proposed the following slate of nominees for the next Tenney-Lapham Neighborhood Council. The formal election will occur at the Annual Meeting, September 17, following the Spaghetti Dinner. Further nominations may be made at that time.

PRESIDENT Richard Linster
 VICE PRESIDENT Shaun Abshere
 SECRETARY Carol Huber
 TREASURER .. Martha Crawford
 BUSINESS Venessa Zakana
 EDUCATION Claire Ann Holm
 HOUSING No nominee yet
 MEMBERSHIP Richard Linster
 NEWSLETTER Rob Latousek
 PARKS ... Jim Dunn & Ed Jepsen
 SOCIAL Pam Polenz
 TRANSPORTATION . Gene Becker
 AREA A REP Carol Weidel
 AREA B REP Ken Richard
 AREA C REP Susan Lower



ACE HARDWARE

- BULK NAILS • SCREWS • BOLTS
- RUG SHAMPOO RENTAL • KEYS MADE
- WINDOWS & SCREENS REPAIRED
- SHADES CUT • HAND & POWER TOOLS
- BUILDERS HARDWARE • PLUMBING
- ELECTRICAL • JANITORIAL SUPPLIES
- HAND TRUCKS • WHEELS • PAINT
- TORO MOWERS • TORO SNOW BLOWERS
- GLASS CUT • BLACK & DECKER POWER TOOLS • LAWN • GARDEN
- METRIC TOOLS • NUTS • BOLTS
- FURNACE & AIR COND FILTERS

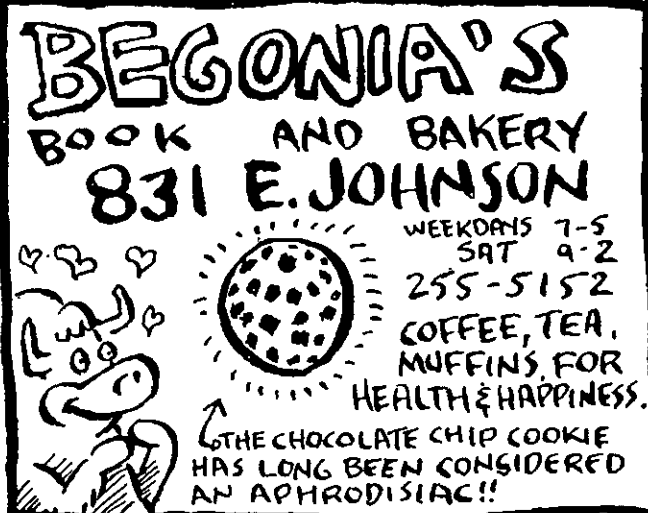
**TENNEY LAPHAM'S
CLOSEST FULL SERVICE
HARDWARE STORE**

**1398 Williamson St
Madison, WI 53703**

OPEN
 DAILY 8AM - 5:30PM
 Mon - Sat
 Closed Sunday

257-1630

Lake Monona



**BEGONIA'S
BOOK AND BAKERY**
831 E. JOHNSON

WEEKDAYS 7-5
 SAT 9-2
 255-5152
 COFFEE, TEA,
 MUFFINS FOR
 HEALTH & HAPPINESS.

↑ THE CHOCOLATE CHIP COOKIE
 HAS LONG BEEN CONSIDERED
 AN APHRODISIAC!!

**KOKOMO JOE'S
DELI**

The Deli You'll Come Back To!

1002 E. Washington Avenue
 257-7827
 Open Daily 6:00am-6:00pm
 Closed Sunday

Homemade Soups Subs
 Sandwiches Ice Cream

Free Medium Soft Drink
 When you purchase a sandwich.
 TLNA Coupon expires 10/31/89

Free Cup of Soup
 When you purchase a sandwich.
 TLNA Coupon expires 10/31/89

ALDER'S REPORT

continued

ADIOS, FRIENDS! Long-time TLNA supporters and good neighbors Coyla Rankin, David Mandehr and daughter Seija will be leaving the neighborhood, heading off for two years in Japan. Coyla will be a psychologist at an Army base school not far from Tokyo. We will miss their neighborhood spirit and the hard work they've put in over the years. Good luck to you all, and don't forget to drop us a line.

HOUSING PUSH PAYS OFF: Thanks to the efforts of Jan Schur, Mary Holland, and Valerie Mellerop, and a little help from building inspection staff, we're seeing an outburst of housing improvements in the neighborhood. New paint or siding and a host of other repairs are taking place. And recent media attention on Channel 3 and in the daily papers has pointed the spotlight on some of the worst properties and landlords. Let's keep the drive alive. Every little bit helps.

MORE TREES ON THE WAY: Three years ago, I set a personal goal of seeing that at least 100 new street trees would be planted each year in the 2nd District. So far, we've surpassed that goal, thanks to Forestry staff. And by next spring new trees should be added along Dayton and Johnson Sts., and side streets from Baldwin west to Franklin. I toured the area this summer with forester John Cerro to pinpoint where the new trees are needed. John has done yeoman's work in the past three years to make this goal a reality.

TAKEN THE BUS LATELY? As chair of the city's Transportation Commission, one of my major goals for the coming year is to help boost ridership levels on Metro. Over the last few years, ridership has dropped drastically. Low gas prices and our love affair with our cars have both led to this ridership decline. However, ridership levels showed increases in May and June, so the news isn't all grim. This fall, give Metro a try.

David Wallner

JOIN



MADISON LITERACY COUNCIL

823 E. Johnson Madison, WI 53703 608/255-0351

Volunteer Tutors Are Needed

- * Basic Literacy
- * English as a Second Language

Call for our workshop schedule!



**UNION
CAB**
of Madison
A WORKER COOPERATIVE

- Meter Taxi
- Parcel Delivery
- Airport Limousine
- Van Charters

24 Hour Service

256-4400

**BURNIE'S
ROCK
SHOP**

- JEWELRY
- LAPIDARY
- SETTINGS
- GEMSTONES
- FOSSILS
- MINERAL SPECIMENS

**901 E. JOHNSON
251-2601**

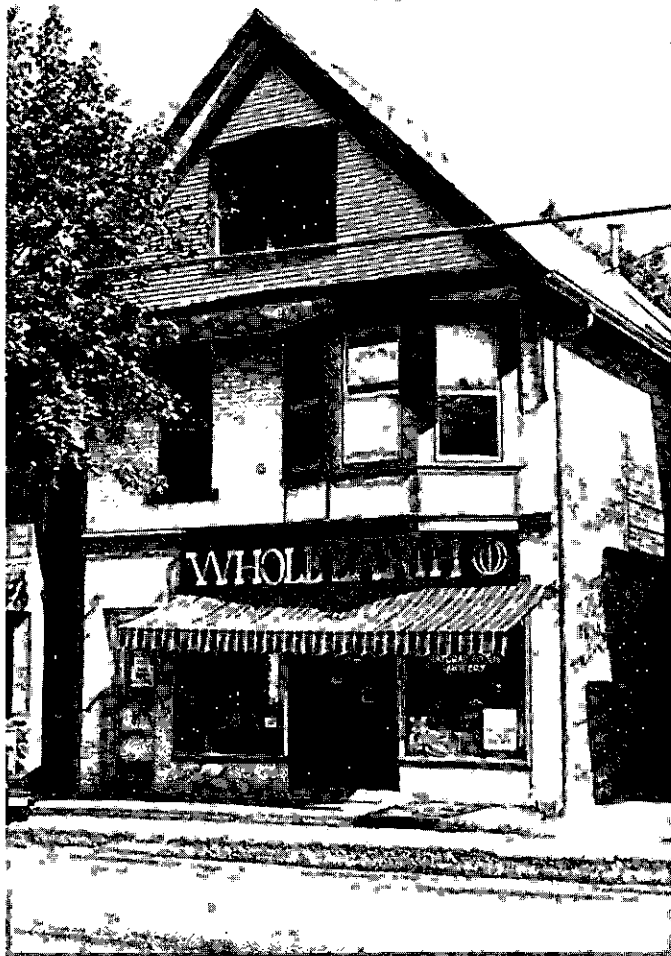
10% OFF

Your next purchase
with this ad



**WSA
COMMUNITY
PHARMACY**

341 State St. 251-3242
TLNA expires 11-30-89



continued

Other anniversary plans include the creation of a scrapbook of *Whole Earth* memorabilia. If Tenney-Laphamites have any *Whole Earth* mementos from the past 20 years, the store would greatly appreciate them bringing them to the store before October 1 to be included in the scrapbook.

In putting the scrapbook together, Venessa has been digging through 20 years of *Whole Earth* history, and has found it fascinating. "When *Whole Earth* was started, there was much more of a wide-ranging feeling among people -- they thought they could change the world. But when you look at what people were striving for, you see that a lot has been accomplished." Some things have changed -- "In a lot of ways, *Whole Earth* has pared down its operations; there was so much emphasis on meetings, and the entire co-op had to be involved in each decision" -- but some have stayed the same: *Whole Earth's* customers and staff members "have always liked the fact that it's a small store," says Venessa. "Our customers feel that we give them personal service. It's something we really have going for us."

Whole Earth's hours of operation are 10-8, Monday-Thursday and 10-6, Friday-Sunday.

Anne Katz

BAHN THAI RESTAURANT
Hot & Spicy Cuisine of Thailand

บ้านไทย Authentic Homestyle
Southeast Asian
Cooking

Thai Domestic Beers-Wines Mango Ice
Cream, Coconut Frozen Yogurt,
Vegetarian Specialties

11:00 AM to 10:00 PM, Sun. 5 PM-10 PM
Free Parking • Carry-Outs
944 Williamson 256-0202
2809 University Ave. 233-3900

**STUDIO
924**
HAIR DESIGNS

*Specializing in
Progressive European Hair Design
for Men and Women*

924 East Johnson St. Telephone
Madison, WI 53703 (608) 251-2777

A promise
you can count on.

The CENTURY 21®
Action Warranty®
Call today for details.

LANA LITZKOW

241-2121

**Century
21**
AFFILIATED-SIMON

Put your trust in Number One.™

©1989 * and ™—trademarks of Century 21
Real Estate Corporation.
Equal Housing Opportunity Ⓢ
EACH OFFICE IS INDEPENDENTLY
OWNED AND OPERATED.

